

ScotPHO COVID-19 Community Overall Vulnerability Measure - Fife Briefing

Contact: Public Health Department

Version: 1.0

Date: April 2020

1. Fife is assessed as having average levels of overall community vulnerability, being ranked 16 of 32 Council areas across Scotland.
2. Within Fife, the ScotPHO tool identifies those local communities who are among the most vulnerable (quintile 1) to least vulnerable (quintile 5) in Scotland.
3. 18% of the Fife population (67,253) are living in the most vulnerable communities.

What is it?

The Scottish Public Health Observatory have produced an online interactive mapping tool with supplementary data tables, summary briefing and technical document illustrating the results and explaining the methodology of their measure of Covid-19 community vulnerability.

What is it for?

This tool can help identify geographical areas that are more vulnerable across a range of factors to the impact of the Covid-19 pandemic and efforts to delay it. ScotPHO intend this tool to be used to help guide the most effective use and allocation of resources through identifying which geographic area to target.¹

What does it measure?

The overall vulnerability measure is a single score produced by statistically combining a range of indicators from routinely collected data across three categories; demographic (proportion of older population), clinical (rates and %'s of a range of measures including premature mortality) and social (rates and %s of a range of measures including income deprivation).

The indicators were chosen if they were considered to be directly relevant to COVID-19, relevant to other demands on clinical services or population health or were factors that may modify the impact of COVID-19 in communities.¹ Please see the technical document for further details of the full list of indicators and the statistical methods used to create these measures (available via link below).¹

The overall vulnerability score has been created for three geographical levels; Council, Interzone and Datazone. Each of these levels has been ranked from most to least vulnerable across the whole of Scotland. The ranks have then been assigned to quintiles, five groupings from the 20% most vulnerable to 20% least vulnerable areas within each geographical level analysed across Scotland.

What does it tell us about Fife?

Fife Council/Health Board overall vulnerability score ranks Fife 16 out of the 32 Council areas which places Fife in quintile 3 of the five overall vulnerability quintiles across Scotland. Within Fife, the interzone and datazone analyses provide greater detail in identifying the areas with differing levels of vulnerability and those areas that are most vulnerable.

Map 1 shows interzones in Fife categorised by the five overall vulnerability quintiles. 19 (of the 104) interzones in Fife are in the most vulnerable quintile in Scotland. Five out of the seven localities/local area committees (LAC) have interzones within the most vulnerable quintile as seen in Table 1 (see Appendix).

Analysis by datazone, a smaller geographical area than interzone, can show vulnerability in more detail. Fife's datazones vary widely in terms of their overall vulnerability, ranging from being ranked 6th to 6,696 in the rankings of the 6,976 Scottish datazones with a higher ranking representing more vulnerability.

91 (of the 494) datazones in Fife are within the most vulnerable areas in Scotland and these are listed in Table 2 in the Appendix. All seven of Fife's local areas/localities have datazones assessed as most vulnerable. These findings indicate there are small pockets of vulnerability across Fife. This is illustrated in Map 2.

What do we need to do in Fife?

The ScotPHO community vulnerability measure and the report for Fife provide evidence that the impact of COVID-19 will be most keenly felt in our most disadvantaged communities.

The response to COVID-19 and the allocation of resources needs to take account of the identified vulnerable geographic areas. This should include for example the resourcing of children's activity centres, community food resilience response and pharmacy distribution and inform the development of local multiagency teams in these areas.

Most of the areas identified in the ScotPHO community vulnerability measure include those interzones that would normally be recognized in terms of inequalities and disadvantage. Organisations, services and groups working within these areas need to be aware of the increased risk from COVID-19 on local population and sufficiently resourced to mitigate the impact amongst most vulnerable groups.

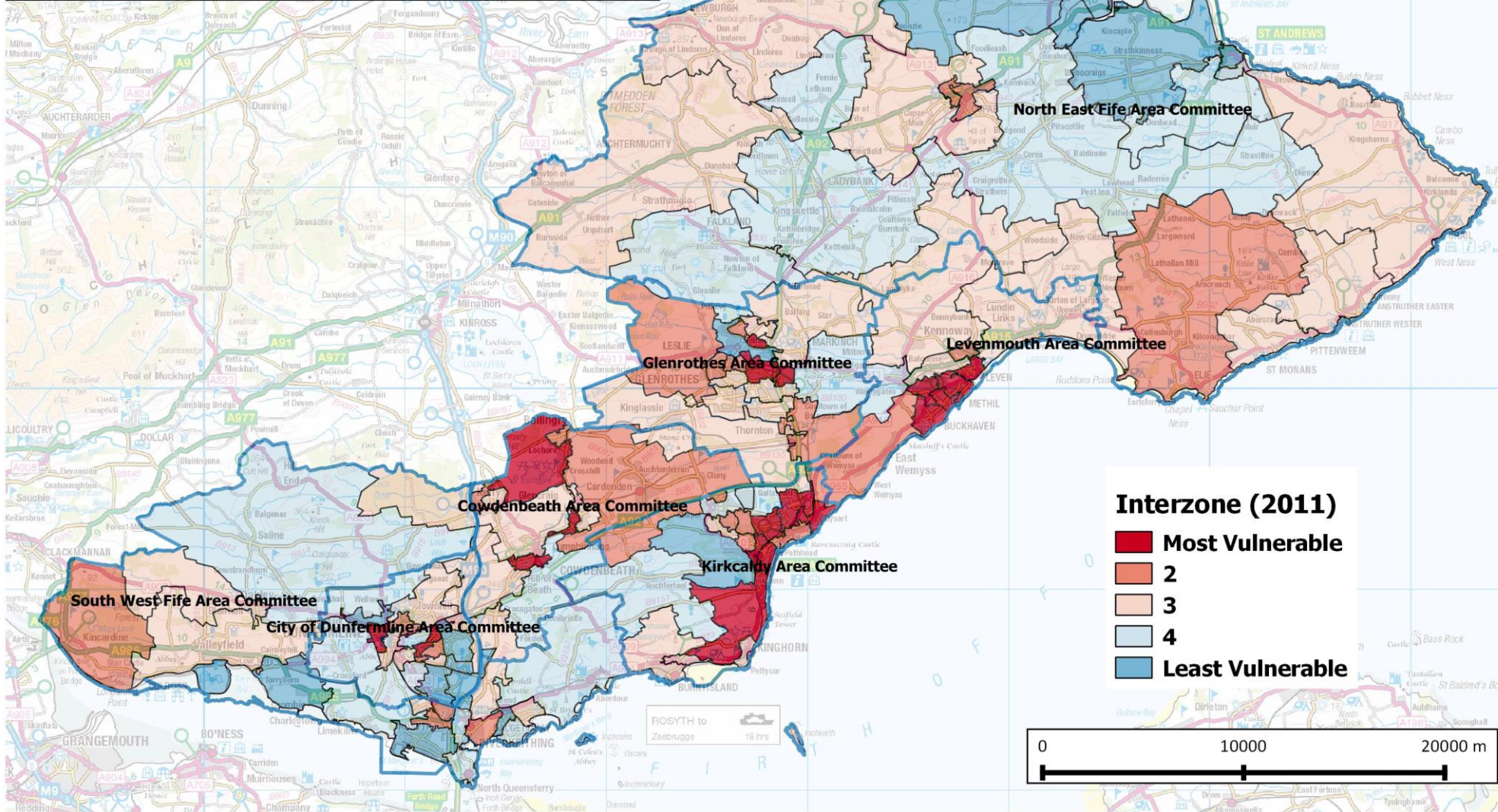
The report also highlights some geographic areas which would not normally be recognised as being vulnerable. Organisations, services and groups operating in these areas should be aware of the impact that COVID-19 may be having on their local population and ensure that resources are allocated accordingly.

Where can I find out more?

1. ScotPHO COVID-19 Community Vulnerability web page:
<https://scotland.shinyapps.io/scotpho-covid-vulnerability/>



<h1>Interzones in Fife by ScotPho Vulnerable (Overall) Quintiles</h1>	
<p>Reproduced by permission of Ordnance Survey on behalf of HMSO. © Crown Copyright and database right 2011. All rights Reserved. Ordnance Survey Licence number 100010824.</p>	
<p>Source: KFD Recipeint: C. Campbell Author: K. Humphries Date: 31 March 2020</p>	



<h1>Datazones in Fife within ScotPHO Most Vulnerable (Overall) Quintile</h1>	
<p>Reproduced by permission of Ordnance Survey on behalf of HMSO. © Crown Copyright and database right 2011. All rights Reserved. Ordnance Survey Licence number 100010824.</p>	
<p>Source: KFD Recipeint: C. Campbell Author: K. Humphries Date: 31 March 2020</p>	

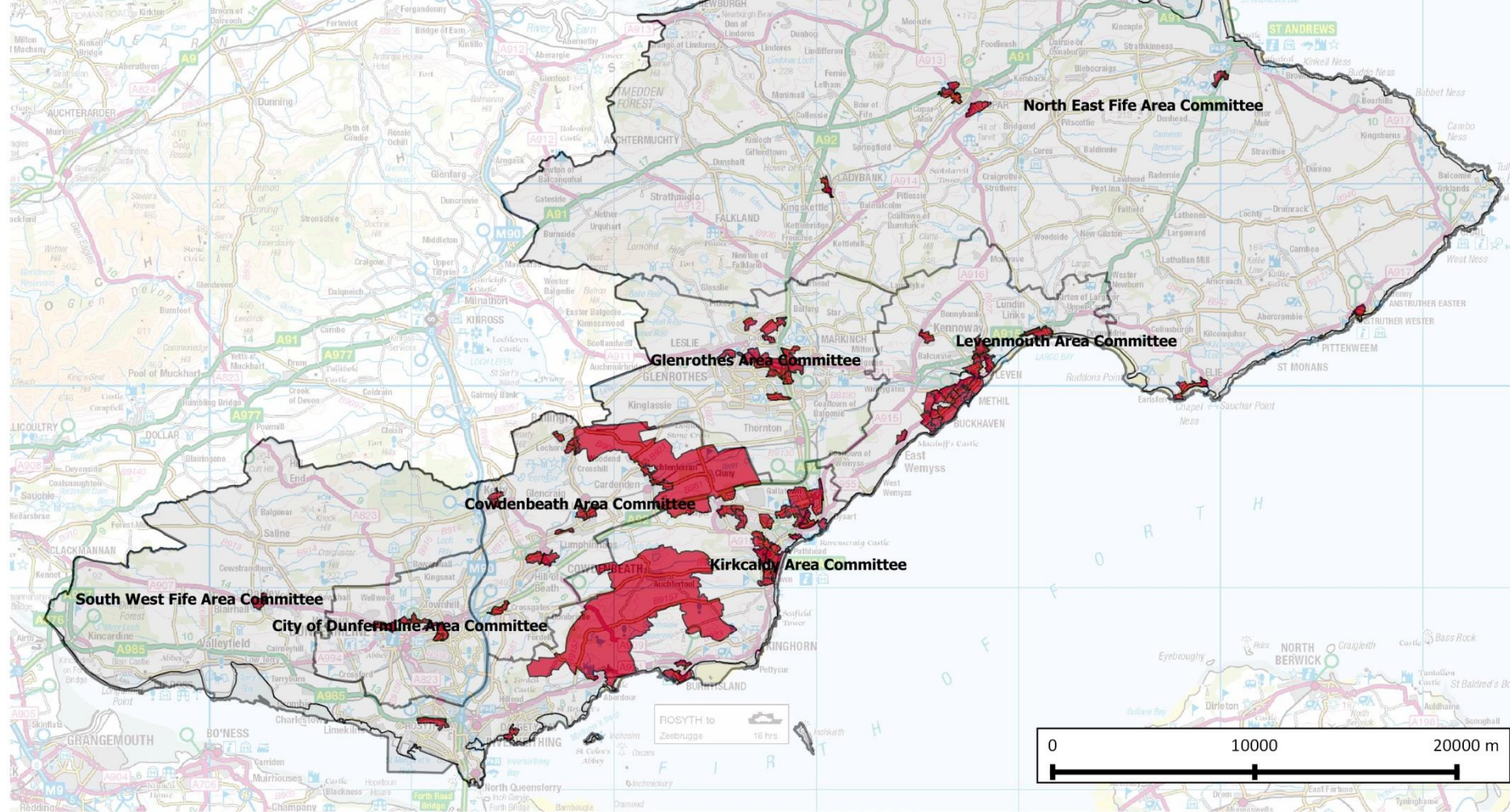


Table 1. Fife Most Vulnerable ScotPHO Covid-19 Overall Vulnerability Interzones¹

By Local Area Committee showing 2018 mid-year population estimate

LAC	Interzone	Population
Kirkcaldy	Kirkcaldy Central	3,253
	Kirkcaldy Gallatown & Sinclairtown	4,393
	Kirkcaldy Bennoch East	2,968
	Kirkcaldy Hayfield & Smeaton	3,663
	Dysart	3,666
	Kirkcaldy Linktown & Seafeld	4,486
Levenmouth	Methil East	3,434
	Buckhaven, Denbeath & Muiredge	4,583
	Methil Methilhill	4,425
	Leven East	2,987
	Methil West	2,419
Cowdenbeath	Lochgelly West & Lumphinnans	3,169
	Cowdenbeath South	3,101
	Lochore & Crosshill	2,806
Glenrothes	Glenrothes Cadham & Pitcoudie	2,057
	Glenrothes Auchmuty	3,320
	Glenrothes Woodside	2,711
City of Dunfermline	Dunfermline Baldrigeburn	3,710
	Dunfermline Touch & Woodmill	2,940

Fife Most Vulnerable ScotPHO Covid-19 Overall Vulnerability Datazones¹

By Local Area Committee and Interzone, Interzone is ***Italic-bold*** where the whole Interzone is classified Most Vulnerable in the Interzone analysis

Datazone	Interzone	LAC
Auchtertool	Aberdour & Auchtertool	K i r k c a l d y
Burntisland Central Burntisland Docks	Burntisland West	
Dysart Central Sinclairtown North	Dysart	
Bennochty Balfour Oriel and Forth	Kirkcaldy Bennochty East	
Forth Park Forth Park North	Kirkcaldy Bennochty West	
Kirkcaldy Central Kirkcaldy Central North	Kirkcaldy Central	
Chapelhill and Torbain Fair Isle North	Kirkcaldy Chapel	
Gallatown West Mitchelston and Randolph Overton Sinclairtown Central	Kirkcaldy Gallatown & Sinclairtown	
Hayfield North Smeaton North	Kirkcaldy Hayfield & Smeaton	
Linktown Central Linktown East Linktown North	Kirkcaldy Linktown & Seafield	
Kirkcaldy Viewforth Pathhead South and Sands	Kirkcaldy Pathhead	
Dunearn Fair Isle	Kirkcaldy Templehall West	

Ballingry West	Ballingry	C o w d e n b e a t h
Auchterderran Landward and Cluny	Cardenden	
Bowhill West		
Cardenden East		
Cowdenbeath Central	<i>Cowdenbeath South</i>	
Cowdenbeath South East		
Crossgates North	Crossgates & Halbeath	
Kelty Central	Kelty East	
Kelty North East		
Lochgelly East	Lochgelly East	
Lochgelly West	<i>Lochgelly West & Lumphinnans</i>	
Lumphinnans		
Lochore Central	<i>Lochore & Crosshill</i>	
Lochore North		

Anstruther West	Anstruther	North East Fife
Cupar North West	Cupar Central	
Cupar South South East	Cupar East	
Cupar Westfield	Cupar West & Springfield	
Earlsferry	Elie Colinsburgh & Largoward	
Ladybank	Kettle & Ladybank	
Newport Central	Newport & Wormit	
Cairnsmill	St Andrews South West	

Datazone	Interzone	LAC
Buckhaven Birds	<i>Buckhaven, Denbeath & Muiredge</i>	L e v e n m o u t h
Buckhaven Central		
Buckhaven North		
Buckhaven North West and Muiredge		
Buckhaven South		
Denbeath South		
Kennoway East	Kennoway & Bonnybank	
Lundin Links	Largo	
Leven Links	<i>Leven East</i>	
Leven South West		
Scoonie South		
Leven Letham Glen	Leven North	
Leven North	Leven West	
Aberhill	<i>Methil East</i>	
Methil New Bayview		
Methil Old Bayview		
Methilhill Toll Bar	<i>Methil Methilhill</i>	
Lower Methil	<i>Methil West</i>	
Methil Memorial Park		
Methil Savoy		
Methil Sea Road		
East Wemyss McDuff	Wemyss	

Auchmuty Dovecot and Town Centre Auchmuty East	<i>Glenrothes Auchmuty</i>	G l e n r o t h e s
Balfarg	Glenrothes Balfarg Pitcairn & Coul	
Cadham	<i>Glenrothes Cadham & Pitcoudie</i>	
Collydean North	Glenrothes Collydean	
Macedonia North	Glenrothes Macedonia & Tanshall	
Pitteuchar South	Glenrothes Pitteuchar	
South Parks North	Glenrothes South Parks	
Woodside North Woodside West	<i>Glenrothes Woodside</i>	
Prestonhall	Markinch & Star	

Balbridgeburn North	<i>Dunfermline Baldridgeburn</i>	City of Dunfermline
Broomhead		
Bellyeoman South	Dunfermline Bellyeoman & Townhill	
Headwell Central	Dunfermline Headwell	
Headwell East		
Touch	<i>Dunfermline Touch & Woodmill</i>	
Woodmill North		

Dalgaty Steeple Clump	Dalgaty Bay Central	South West Fife
Comrie East	Oakley Comrie & Blairhall	
Admiralty South West	Rosyth Central	